

PGiMeet

WEB COLLABORATION WITH NETSPOKE

Increase the productivity of your meetings and engage your audience through full-featured web collaboration. With Netspoke web conferencing, you can hold productive meetings with a small group or give powerful presentations to audiences of up to 125 people.

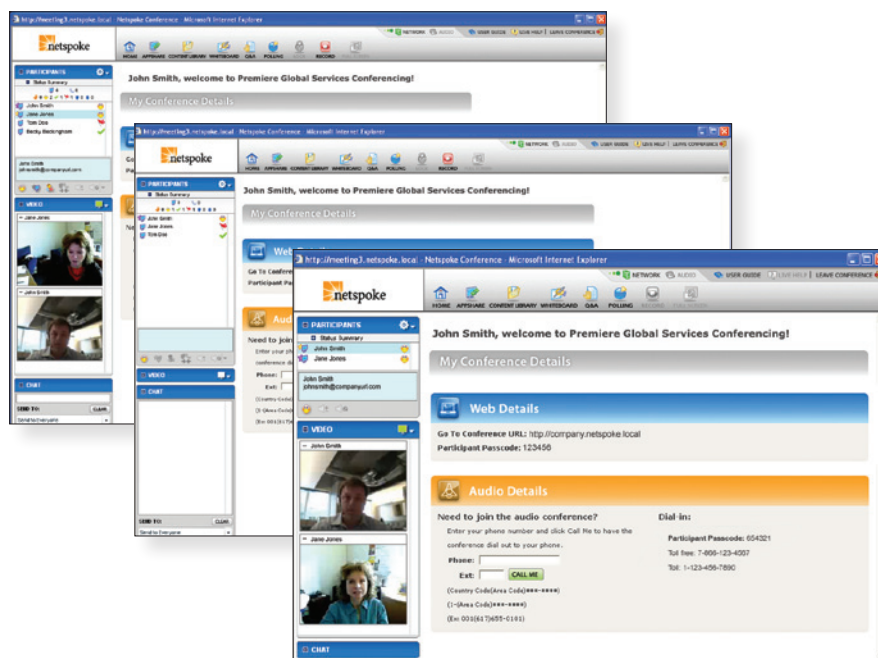
Benefits of Netspoke

Netspoke lets you connect with co-workers, clients and prospects at a fraction of the cost of face-to-face meetings. Plus, it's the greenest way to meet.

- › **Better interaction.** Live web conferencing can jump-start a project and quickly get everyone on the same page. You'll know who's on the conference and who's talking.
- › **Easy to use.** Invite attendees to your personal meeting room, and manage the conference with user friendly host controls.
- › **Simple for participants.** Participants control their own audio with volume and mute buttons. Netspoke even calls out to your participants directly to connect them to the conference, helping to start your meetings on time.

Web Conferencing Features

Ideal for daily team discussions, sales presentations and training, Netspoke has a variety of integrated audio and rich collaboration features to make your meetings more interactive and productive.



- › **Personal Meeting Room.** Customize your meeting URL by creating a room name, and conducting all of your meetings from this single, on-demand meeting room.
- › **Video Integration.** Share live video of all your presenters with your participants via webcam from the meeting interface.
- › **Integrated Audio.** Mute/unmute individual lines or all participants from the web interface; active speaker icon shows who is talking.
- › **Recording.** Both audio and web will be captured in one file, with just one click.
- › **Shared PowerPoint.** Upload and share presentations right from your computer to audiences across the world.

- › **Application Sharing.** Demonstrate and share any software or application from your desktop to remote audiences – it’s firewall friendly.
- › **Participant Controls.** Receive participant feedback as attendees set their status / mood, or the raise hand feature.
- › **Collaboration Features.** Create a truly interactive meeting with chat, Q&A, web tour, polling and virtual whiteboard features.
- › **Virtual Whiteboard.** Brainstorm, diagram and share ideas just like you were in a conference room.
- › **File Transfer.** Make supplementary handouts, images or spreadsheets available for download before, during or after a conference.
- › **Live Help.** Live customer support and technical advice at the push of a button – during live conferences or any time you’re logged in.
- › **SSL Encryption.** Protect your high security meetings with SSL encryption.
- › **Custom Branding.** Apply your company logo and colors to the Conferencing Hub and/or the Netspoke web interface using the online administration tools.
- › **Registration and Evaluation Surveys.** Tailor your conferences to the individual needs of your participants and collect detailed feedback.
- › **Content Library.** Store presentations, bookmarks, polling questions and other content for easy selection.
- › **Online Reporting.** Generate detailed reports of all of your conferencing and user activity from your own computer.

Conferencing Hub Features

The Conferencing Hub is your starting point to schedule or manage meetings, upload and store presentations, pull reports and reach 24 hour live help or online support.

- › **Scheduling and Invitations.** Schedule conferences with a few quick online steps and automatically send invitations to your attendees.

ABOUT US

Premiere Global Services, Inc. (NYSE: PGI) is a global provider of on-demand, communication technologies-based business process improvement solutions. Headquartered in Atlanta, Georgia (USA), and with presence in 24 countries worldwide, Premiere Global delivers solutions to an established customer base of over 50,000 companies, including nearly 95% of the Fortune 500.

LEARN MORE

Contact us today or visit our website to view customer videos or product demonstrations and get the details on all of our solutions.



The Terminus Building
 3280 Peachtree Road NW
 Suite 1000
 Atlanta, GA 30305-2422

marketing@premiereglobal.com